

Baltimore Modern Quilt Guild

BMQG Newsletter – January 2024

Volume 1, Issue 1

The purpose of the guild is to share knowledge of modern quilting techniques, patterns, modern fabrics and quilt-making by providing meetings, social gatherings, educational workshops and field-trips to support quilting activities, encourage modern quilt-making and promote the appreciation of this craft. The Baltimore Modern Quilt Guild supports and encourages the growth and development of modern quilting through art, education and community.

Note from the President

2024 is finally here and we are planning many fun activities, including as many in-person events and meetings as possible.

I have attached a calendar for 2024, however keep reading your monthly newsletters for updates and possible changes to the schedule as the year progresses.

I'm looking forward to the new year and what we have planned for the year ahead. If you have any questions, you can contact me at: phyllis.cook@baltimoremqg.com

Phyllis Cook
BMQG President

January's Meeting

January's meeting on the 14th will be a hybrid, with an in-person meeting at the Arbutus Library, located at 855 Sulphur Spring Rd. We will have a speaker on zoom: Sarah Ruiz who will give a talk about the "Inspiration to Quilt." The lecture will be shown at the meeting on a

screen and available to members who sign in from home. However, the remainder of the meeting will not be accessible to those to join on Zoom. So please try to attend in person to enjoy the company of your fellow quilters and the information that will be presented about the meetings to follow. We will also have a show and share for the in-person attendees. A link will be sent out to all members to attend by Zoom if that is your preference. The meeting starts at 1:30pm.

Membership Renewal

It's that time of year – time to renew your membership for the 2024 sewing season. We are looking forward to once again meeting in person for most of the monthly meetings. Please visit the guild website: <http://baltimoremqg.com/membership> to complete the renewal process. Dues are only \$50 for the year. This includes membership in the national Modern Quilt Guild. Dues must be received by January 31 to prevent a lapse in the national guild membership. Dues are payable using debit/credit card or PayPal. If using PayPal please write your name and

“membership dues” in the notes box. One other option to pay your dues is by check. Checks should be sent to Amy May, our Treasurer and she will let Diane know about the payment. Contact Diane at: membership@baltimoremqg.com with questions or problems.

On or about February 1, you will receive the new password to our website and the membership roster will be updated. If you are a new member or you need to change an address or phone number, please send any changes to Diane. All Board members’ contact information will be listed at the end of the newsletter.

If you do not wish your address, phone number or email address to be shown in the membership only (password protected) listing, you may opt out. Please let Diane know what information you do not wish to be listed. For contact reasons, we will keep your information available to members of the Board only.



Charitable Giving

Hi and Happy New Year!

Thank you to JoAnn Stelmack for all her time, work and showing me the ropes! I am looking forward to meeting all our fabulous quilters!

OUTREACH: The Down’s Syndrome Association reports they have plenty of quilts for now, and will be in touch when more are needed. The House of Ruth has an ongoing need, so they will be our primary focus with the Down’s Syndrome Association receiving quilts as needed.

The House of Ruth currently has 28 children ranging from toddler to 18. This can change at anytime. They have no restrictions on quilt size—most beds are twin size sizes. Our Board is thinking at least 40”x40” and up to twin (72”x 92”). The children keep the quilts when they leave, so it is something of their own. A question was raised re: sending a book along. The answer is yes— new books only.

PICK-UP: Please bring any finished quilts to our in person meetings and there will be a labeled bin for them. I will continue to receive quilts at Loch Raven High School on Sat. 1/20 and 2/17 at 11 AM.. Please let me know by Friday evening if dropping off, otherwise I will NOT be there. I’m in the Kingsville area of Baltimore County, if that is closer to where you may live.

QUILT SUPPLIES & PATTERNS: I have quilt labels, batting, tops that need borders and finishing as well as a few partial kits cut. I am happy to mail quilt labels or you can pick up at a meeting. PLEASE consider finishing one of these for the House of Ruth---They need a good home! Patterns can be your choice and The National website has many resources, which enhances education open to you.

<https://www.themodernquiltguild.com/>

CHALLENGE for 2024: Each person to make one quilt for the House of Ruth! The children will be keeping them. Something that is only theirs and may provide a positive impression on a rough period in their lives.

Other projects to follow---feel free to share ideas. If you have any questions, feel free to contact me.

Amy Krebs
Director of Charity Relations
7016 Heathcoate Dr., Kingsville 21087
ajdkrebs@gmail.com
410-456-8471

February and Superbowl Sunday Sew-in

The Superbowl falls on the second Sunday of the month of February, which is the day of our planned sew-in. This year Kate Lane found two projects to offer as our suggested sewing projects:

Ok...let's get ready to rumble at the 2024 BMQG Super Bowl Sew In!
BMQG is hosting a Super Bowl Sew In on Sunday, February 11th from 9am to 3pm.
First, let's put together your game plan:

We will be featuring two quilt designs that we will be doing as a group (however you may choose to work on whatever project you like).

1. Multi Use Mega Pinnie<<https://bluepatchquilter.blogspot.com/2017/01/multi-use-mega-pinnie.html>> - purchase for \$5.00 on Etsy<https://www.etsy.com/uk/listing/456730010/mega-pinnie-companion-set?ref=shop_home_active_1>

2. Find Your Path
<https://my.modafabrics.com/webfiles/fp_P_S47530-CreativityGlows-FindYourPathQuilt.pdf> - Free Moda Pattern using up your stash - getting comfortable with Flying Geese

Check out the Website links. The first project is a square cube you can make to hold your sewing equipment. Scissors, seam rippers, needles, pins etc....
The second is a great way to use up some fabric and work on your Fleeing Geese half square triangles. With a free pattern you make it to the desired size you want. With a

mix of low volume and high volume prints, prints and solids or color matching of your choice.

Get your Super Bowl snacks ready! We can't wait to see you on the big day! Kick off starts at 9am!

The halftime show is at 1:30pm for all guild general membership. Meeting information and Zoom link to follow. The sew-in is expected to end at 3pm.

For extra fun, contact your quilt guild friends who live nearby and arrange for a small group sew-in.



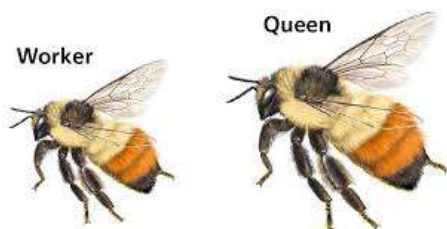
Bee Swaps and Quilt-in-a Box

We are bringing back the bees! We hope everyone enjoys a good bee and we hope to have several bee groups active at the same time.

Each bee group will have 5-6 members. Each month one member of each group will be designated the queen bee. When you are the queen bee, you get to tell the other bees (the workers) what you want them to do. Usually this involves choosing or designing a quilt block and providing instructions as to size, color and sewing details. If your block is fairly simple you may ask for two blocks, but don't get greedy. Each month these blocks are returned to the queen and a new queen starts her reign. We will assign members to each group and provide the order of who is queen.

You can join more than one bee group if you are overly ambitious. This way you can gather twice the number of blocks in any 6-month period. How sweet is that? Sign-ups for the first half of the year will occur at the January meeting, or you can send your name to Valarie by 1/15 to be included in a bee. See last page of the newsletter for contact information.

The second half of the year we will also have a bee, called "quilt in a box." Each queen bee will assemble the material she wishes the worker bees to use in creating their blocks for her. Instructions are also given as to size and perhaps primary colors vs. secondary colors. Or you can leave it up to your bees to produce some sweet and unique blocks.



Lottery Blocks

Lottery blocks will be run quarterly and feature one block design to be used by all members. The first block will be started in January and due in March. You can make as many blocks as you want. The more blocks you make the higher the chance you will win the lottery. Put your name on the back of each block (somewhere it won't show) and one block is chosen from all that are submitted. The person whose block is selected, wins all the other blocks. For January we have chosen the Block named 'Puzzle Patch' from the MQG website. The link can be found here:

https://www.themodernquiltguild.com/wp-content/uploads/2022/08/PuzzlePatchGovindan_final-1.pdf



Here is the first lottery block: Puzzle Patch – 4 examples by Valarie. Use solid colors and vary the color value per block for the angular pieces. The squares can be a light color of white, gray or beige. All blocks due by March's meeting.

Looking Ahead for 2024

January: Lecture with Sarah Ruiz, location- Arbutus Library

February: Superbowl sew-in with sewing at home or in small groups. Meeting on Zoom at 1:30. Quiltcon in Raleigh. February 22-25.

March: Lecture with Bianca Springer – Location: Library location TBD.
First lottery blocks due. Draw names for name tag swap.

April: Charity quilt sew-in. Location TBD.

May: Make May Modern Guild Retreat.
Location: Maritime Conference Center
Dates: May 17 and 18.

June: Guild swap. Swap with another guild or within our guild. Second round of lottery blocks due. First round of bees completed.

July: Start second round of bee groups, including quilt in a box. Stash sale.

August: Community meet-ups for socializing outside of meeting time.
Handwork demos and time for practicing during the meeting.

September: Member demos in a round-robin format. Third round of lottery blocks due.

October: Lecture with Sheila Frampton-Cooper. Fall retreat also this month.

November: Design block challenge.

December: Holiday party. Fourth round of lottery blocks due. All bees completed.



Typical Meetings

We meet on the 2nd Sunday of the month unless otherwise noted.

We meet in Baltimore Public Library Meeting Rooms (please note that we are not affiliated with the Library). The

Library's policy is that we can only book rooms three months in advance. As such, please continue to check our website for meeting locations in the future. We are not dedicated to a single branch but rather select locations based on availability.

For more information about our guild and a members only page, go to our website/blog <https://baltimoremqg.blogspot.com/>

Want to see what we're up to? Connect with us on social media!

Instagram: [@baltimoremqg](#) #baltimoremqg

Facebook: [BaltimoreModernQuiltGuild](#)

Email us at baltimoremqg@gmail.com

Board Members for 2024

Phyllis Cook
President
phyllis.cook@baltimoremqg.com

Veronica Jessamy
Vice President
veronica.jessamy@baltimoremqg.com

Amy May
Treasurer
amy.may@baltimoremqg.com

Laura Baltizis
Director of Education
laura@baltimoremqg.com

Diane Winter
Director of Membership
Diane.winter@baltimoremqg.com

Megan Price
Director of Communications
megan.price@baltimoremqg.com

Amelia Krebs
Director of Charity Relations
Amelia.krebs@baltimoremqg.com

Valarie McNeese
Director of Programming
valarie.mcneese@baltimoremqg.com

Kate Lane
Assistant Programming Director
Kathryn.Lane@fcps.org